

### #100 3" FRESNEL SPOT:

Small 3:" Fresnel lens spot for short distances 2' to 10'. Sometimes called an "Inky". Use for accents, back lighting, displays, or special effects. Bottom knob adjusts focus. Die cast aluminum housing includes 3" dia. aluminum mounting base, 36" cord (no plug), safety cable, and 3-3/4" x 3-3/4" color frame. No clamp is available to fit the 3/16" dia hole in the base plate. To use a clamp instead of the base plate will require drilling a larger hole in the mounting yoke. Uses double contact bayonet base lamps. U.L. listed for 100 watts. Weight 2.2 lbs. Altman brand.

100	3" Fresnel spot with base plate.....	\$ 88.12
100-CFB	Black color frame, 3-3/4" x 3-3/4" .....	\$ 5.00
100-BD	Black 2 leaf barndoor.....	\$ 36.00



#100 3" Fresnel  
[Link to data sheet](#)

### #65 6" FRESNEL SPOT:

Standard fixture for medium throw distances. 6" Fresnel lens. Durable sheet steel housing. UL listed to 750 watts using BTL-BTN series lamps. Slide focus knob on bottom to adjust light beam. Choice of medium prefocus socket for BTL series lamps or socket for HPL series lamps. Includes 7.5" x 7.5" color frame, 3' cord (no plug), and safety cable. Altman brand. Weight approx. 11 lbs.

65Q	6" Fresnel, slide focus. with medium prefocus socket .....	\$ 134.40
65Q-HPL	6" Fresnel, slide focus. with HPL socket.....	\$ 156.00
6-CFB	Black color frame 7-1/2" x 7-1/2", included .....	\$ 5.00
510	Malleable iron pipe clamp .....	\$ 10.40
6-BD4	Black 4 door, 8 leaf barndoors.....	\$ 52.00
6-SN	Black snoot, fits 7-1/2" x 7-1/2" holder.....	\$ 16.80
71-1003-HPL	Retrofit kit to install HPL socket, only in older #65 Fresnels.....	\$ 64.00



#75Q 6" Fresnel  
[Link to data sheet](#)

### #75Q 8" FRESNEL SPOT:

Standard fixture for longer throw distances. Durable sheet steel housing. UL listed to 1000 watts for use with BVT or BVV series lamps. Slide focus knob on bottom to adjust light beam. Has mogul prefocus socket. Includes 10" x 10" color frame, 3' cord (no plug), and safety cable. Altman brand. Weight approx. 23 lbs.. Altman brand.

75Q	8" Fresnel, slide focus. ....	\$ 277.60
6-CFB	Black color frame 10" x 10", included .....	\$ 5.00
510	Malleable iron pipe clamp .....	\$ 10.40
8-BD4	Black 4 door, 8 leaf barndoors.....	\$ 70.40
8-SN	Black snoot, fits 10" x 10" color frame holder .....	\$ 23.20



#75Q 8" Fresnel  
[Link to data sheet](#)

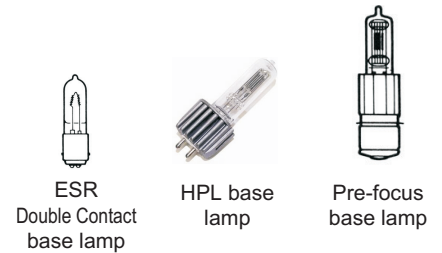
### Installed plugs for Fresnels:

Installed male 20A stage pin plug.....	\$ 23.00
Installed male 15A Edison plug .....	\$ 27.00
Installed male 20A Twist-lock plug .....	\$ 27.00

### Lamps for Stage Fresnels:

Cat. No.	Price	Use With	Watts	Volts	Hours	Color Temp.	Rated Lumens	Lamp Base
ESR	\$ 14.65	100	100	120	1000	3000K	1900	DCB
BTL	\$ 18.95	65Q	500	120	500	3050K	11,000	Medium Pre-focus
BTM	\$ 26.25				100	3200K	13,000	
BTN	\$ 19.00				500	3050K	17,000	
BTP	\$ 25.20				200	3200K	20,000	
BTR	\$ 21.00				250	3200K	28,500	
BVT	\$ 34.00	75Q	1000	120	500	3050K	24,500	Mogul Pre-focus
BVV	\$ 33.25				250	3200K	28,500	
HPL575/115	\$ 19.75	65Q-HPL	575	115	300	3250K	16,520	HPL
HPL575/115-X*	\$ 19.75				2000	3250K	12,360	
HPL750/115	\$ 19.75				300	3250K	21,900	
HPL750-X*	\$ 19.75				1500	3250K	16,400	

\* HPL lamps with -X denotes longer life versions. HPL lamps are also available in 120 volt versions for locations that have higher line voltage.



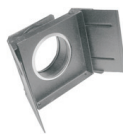
ESR  
Double Contact  
base lamp

HPL base  
lamp

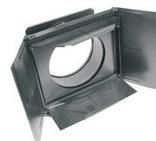
Pre-focus  
base lamp



Black  
color frame



100-BD  
Barndoors



4-door, 8 leaf  
barndoors



Snoot



510  
Clamp